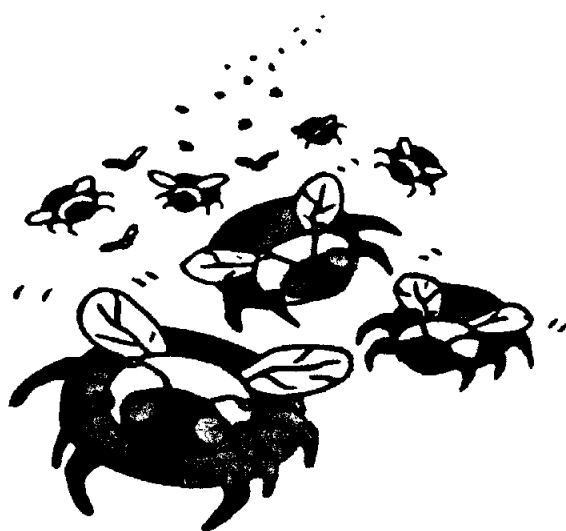


**Red River Apiarists' Association**

# **Bee Cause**

**Volume 2, Issue 5**



**May 2000**

**Made By: Melissa Wayne**

## Meeting Location

**Dennis Ross's house**

## Meeting Date

**May 27th**

The re scheduled RRAA picnic at the home of  
Dennis Ross, see map on page 6.

RRAA Website URL:

<http://www.granite.mb.ca/~rwayne/RRAA.html>

The *Bee Cause* newsletter is published by the *Red River Apiarists' Association* eight times per year (monthly excluding June, July, August and December).

Membership in the *Red River Apiarists' Association* is \$20.00 per year and includes a subscription to the *Bee Cause*.

**President: Jim Campbell**  
ph. 467 5246  
Box 234  
Stonewall, MB  
R0C 2Z0

**1st Vice President: Doug Henry**  
ph. 757 4694  
Box 6 Group 321 RR 3  
Selkirk, MB  
R1A 2A8  
email: ve4tg@rac.ca

**2nd Vice President: Raymond Kozak**  
ph. 242 3077  
Box 147  
LaRiviere, MB  
R0G 1A0

**Secretary: Ron Rudiak**  
ph. 326 3763  
Box 1448  
Steinbach, MB  
R0A 2A0  
email: manbeekr@mb.sympatico.ca

**Treasurer: Dennis Ross**  
ph. 878 2924  
Box 10 Group 125 RR1  
Vermette, MB  
R0G 2W0  
email: rosskr@mb.sympatico.ca

**MBA Delegate: Jim Campbell**  
ph. 467 5246  
Box 234  
Stonewall, MB  
R0C 2Z0

**Reporter: Ron Rudiak**  
ph. 326 3763  
Box 1448  
Steinbach, MB  
R0A 2A0  
email: manbeekr@mb.sympatico.ca

**Past President: Rod Boudreau**  
ph. 885 3344  
795 Pepperloaf Cr.  
Winnipeg, MB  
R3R 1G2  
email: goldrod@netcom.ca

**Newsletter & Website: Ron Wayne**  
ph. 755 3410  
Box 43  
Hazelridge, MB  
R0E 0Y0  
email: rwayne@granite.mb.ca

## ***President's message:***

I continue to be pleased with our meeting turnout. It is great to have a bunch of enthusiastic people seeking friendship and advice. I appreciate your feedback as well! Together we can keep improving our information flow so that all of us benefit from each other. Thanks to Robyn Underwood for the information on her research at U of M. Hopefully we will hear some results from the tracheal studies as well.

As we move along into May, the scenery around us is continually changing. Tree leaves are green, the grass will soon be ready to cut, and our bees are searching for more pollen, as our colonies grow from successful over wintering. Just a reminder again, Spring treatment is critical to get the upper edge on the health of our colonies. Hopefully you have already begun to treat.

Thanks to Jim Campbell for the Canada Vest, Ted Schuneman for the many Bee brushes & Top Board and Rod Boudreau for the sunglasses for our April meeting door prizes.

Hopefully all of you got your taxes in on time. Somehow it always seems to be a last minute job doesn't it? However, now that you've recognized several areas in your bookkeeping that need attention, why not get the upper hand. Make sure to keep all invoices and receipts Perhaps set aside a large envelope to carry in your vehicle. Then whenever you have a purchase, toss the receipt into the envelope. Then at the end of the year, everything will be together. The next task will be to remember where you moved the envelope.

Later this Summer, Ted Rubenchuk, chair of the 2000 Honey Show, will be looking for ideas on how to improve our show. If you can help, please give him a call.

See you at our May 27th picnic!

Jim Campbell

## ***Editors note:***

Well this is the last issue until September and a tough one it was to get completed. Between the bees, work, computer glitches, well I'm sure you're all pretty busy around this time of the year also so I need not say anymore on this topic.

The RRAA picnic scheduled for May 13th was cancelled due to poor weather and the newsletter not being published yet with the map of how to get there. So May 27th is the new date, hopefully the weather will be more cooperative you'll all have the newsletter with the map in it by then, sheesh!

I let my 13 year old daughter do this months cover page cause she said mine lacked imagination! Hello!

Anyway have a great season and try to keep your cussing to an acceptable level after one of our little beneficial insects decides to sting you. :)

Later Ron

# Red River Apiarists' Association

## *Minutes of the Regular Meeting*

### April 11, 2000

The regular meeting of the Red River Apiarists' Association was held at the River Heights Community Club on April 11, 2000 with thirty members and guests present.

**Jim Campbell called the meeting to order at 7:30 PM.**

**Motion:** To accept the minutes accept the minutes as circulated in the *Bee Cause*. (Moved by: Rod Coudreau  
Second by: Ted Rebenchuk) **Carried**

#### **Committee Reports:**

**MBA Representative:** - Jim Campbell reported that there was good attendance and an informative program at the Pollination Seminar which took place in Carman earlier in the day.

**Varroa mites found in New Zealand.** Jim announced that honey bee and queen shipments have been halted from New Zealand because varroa mites had been discovered near Auckland.

**RRAA Picnic and Beekeeping Field Day:** The annual picnic and beekeeping workshop will be held on Saturday, May 13 at Dennis Ross' home apiary. A map showing the location will be included in the *May Bee Cause*. Ron Rudiak will look after the purchase of food and refreshment items (There will be a small charge for lunch). A beekeeping auction will be held for members to sell their surplus equipment. A 10% fee will be donated to research on all items sold unless they are items which are donated to raise money for honey bee research. Phone Rhéal Lafrenière, at 945-4825, in order to place items in the auction. For the beekeeping activities make sure that you bring a veil and bee suit or gloves. For the picnic bring your own lawn chair.

**Honey Show Report:** Jim reported that space in Kildonan Place is available this year on 13 to 15 (Fri., Sat., and Sun.,) and St. Vital Shopping Centre on October 27 to 29 (Fri., Sat and Sun.,). It was suggested that we use both locations to promote beekeeping and honey. It was felt that the RRAA would be able to handle both locations with our increasing membership.

#### **Honey show committee for 2000**

Ted Rebenchuk - Co-Ordinator

Ron Rudiak - Baking entries and judging and assist the co-ordinator

Murray Porter, the previous chairman, has developed a template for organizing the honey show that he will provide for the new committee.

Jim Campbell - Location procurement and resource person.

Robyn Underwood gave a presentaton on managing tracheal mites, an ongoing project using formic acid treatment of honey bee colonies within a building.

**Draw prizes:** The following draw prizes were won by:

Crop Pollination Book - Sandra Clems

Vest - Murray Porter

Sunglasses- Linda Stuart

Inner Cover - Rod Boudreau

Bee Brushes - David Gulakow, Ted Rebenchuk, Ray Hourd, Nelson Szaluk, Donna Hourd & Wilf Jaques

And a big thank-you goes to the following members for donating draw prize items:

Vest & Pollination Book - Jim Campbell

Inner cover and bee brushes - Ted Scheuneman

Sunglasses - Rod Boudreau

Ron Rudiak (Secretary - RRAA)

**Red River Apiarists' Association**  
***Minutes of the Executive Meeting***  
**May 2, 2000**

The executive meeting of the Red River Apiarists' Association was held at Perkins restaurant, Kildonan Crossing, 1615 Regent Avenue with Jim Campbell, Doug Henry, Dennis Ross and Ron Rudiak present.

**Jim Campbell called the meeting to order at 7:45 PM.**

**Committee Reports:**

**RRAA Picnic and Beekeeping Field Day:**

The committee discussed the bee equipment auction sale which will take place at the May 13 field day.

The picnic and field day notice in the *Bee Cause* will include a map and directions to the location.

Dennis Ross and Ron Rudiak will supply the barbecues.

The cost for lunch will be \$2.50 for each person.

The committee wants to have someone familiar with the safety precautions used in handling formic acid make a presentation on using this material.

**Treasurers report:**

Dennis Ross reported that the RRAA bank balance is \$3545.85

Most of the RRAA members have paid their membership fees for 2000. Dennis will update the mailing list with Ron Wayne.

Dennis has cancelled the meeting room for May at the River Heights Community Centre.

**New Business:**

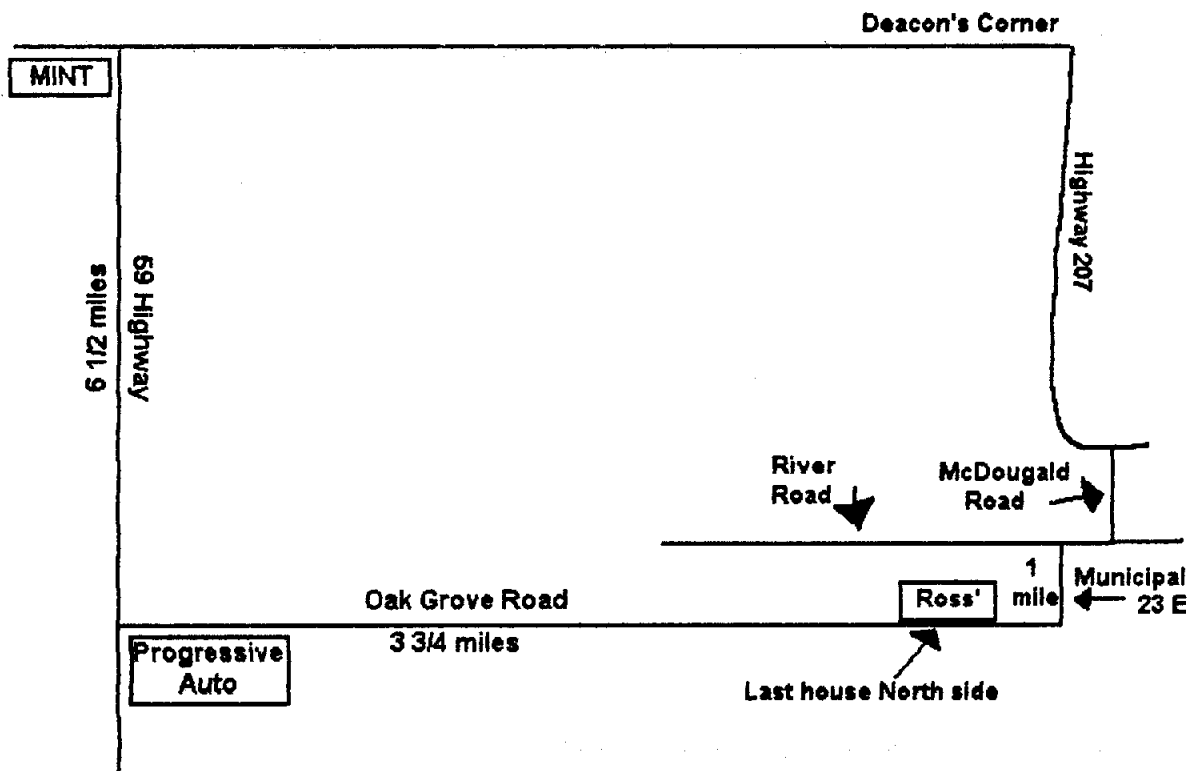
The date of the next regular meeting is September 12, 2000

Doug Henry has produced a draft copy of a pamphlet which we may hand out to prospective beekeepers and other interested parties. It is done on a single 8 1/2 by 11 sheet folded in half to give four pages. The title is *Do You Keep Bees Or Would You Like To*.

The meeting adjourned at 8:15 PM

Ron Rudiak (Secretary - RRAA)

*Map of how to get to the Ross residence for the May 27th picnic.*



***For Sale:***

3 frame nucs available may 8-15, \$90.  
contact Dennis Ross 878-2924

*Figured this was the perfect place for your ad Dennis :)*

## **Date for 2000 Honey Show Set for October**

by Jim Campbell

Plans are well underway to hold our Manitoba Honey Show on October 27-29, 2000 at St. Vital Centre, 1225 St. Mary's Road, Winnipeg. This will be about two weeks later than other years. This change was made to make it easier for participants to prepare their entries after the busy honey harvest season.

The Manitoba Beekeepers Association presents the "Manitoba Honey Show" as a way to promote awareness of Honey as a natural food and an ingredient for everyday use. The display area will be located in the aisle space in front of Addition-Elle. This space is at the junction of the Walmart store aisle and the food court aisle of the shopping center. This should be a good traffic area.

The Honey Show plans call for four main promotional areas. The first, The Product Competition area, will consist of a display of Honey types and colours along with Baking samples (cookies, cakes, pies) which demonstrate the everyday application of honey, to mall shoppers.

A Product Application area features a display of finished foods and products using honey or beeswax as an ingredient. These items (shampoo, cereals, nuts, etc.) will be supplied by various stores operating within the St. Vital Centre mall.

The Consumer product area consists of various products containing beekeeping related materials. These items (specialty candles, creamed honey, unique flavoured honey, face creams, household supplies, etc.) are offered for sale to mall consumers by the local producers.

The fourth area promotes Industry awareness. This area houses a display of tools and equipment used by the beekeeping industry. Last year this area was especially popular with school children. The visitors could listen to the steady "hum" from the observation hive, while looking for the elusive "queen". A great way to help people understand the nature of the Honey industry!

The Manitoba Beekeepers Association sponsors the Honey Judging Competition and Show, while the Red River Apiarists Association will staff the display with volunteers from its membership. The contest regulations will be published in this newsletter, later during the year.

Should you have further questions regarding this show, contact Show chairperson Ted Rebenchuk at 204-268-1892, or MBA promotions co-chair Jim Campbell at 467-5246 .

## **10 Tips on Selling Honey Roadside**

1. Roadside signs are essential. The lettering must be large and clear enough to read from a passing vehicle. Keep your message simple: "Honey" or "Honey for Sale".
2. Remember the 3 most important words for honey products: Quality, Quality, Quality.
3. Honey containers need to be clean. Roadsides are dusty, dirty places. Jars should not be sticky - no one wants to carry a sticky container home. Sticky containers also attract yellow jackets and dust.
4. A large percentage of roadside purchasers become regular customers. If they like your honey they will come back for more. Make a customer feel good about finding such an excellent supply of local honey.
5. Offer several forms of honey if you can - liquid, comb, creamed. Regularly replace any jars on display that are starting to granulate or become dusty. Try offering "family size" economy packs. Think variety of containers.
6. Pay attention to your display. Customers feel more encouraged to buy from an attractive display than from just a few tired-looking jars. Remember that labels sell.
7. Advertise your honey with other products or events, like National Honey Month. Offer combinations of seasonal produce and recipes with honey. Plan promotions with season and cultural or religious festivals.
8. Do not forget tourists. Local honey can be a popular gift item. Attractive labelling and containers are essential here. Such honey sells for a premium price.
9. Provide service and visit your roadside market keeping it constantly stocked with good quality honey in attractive containers.
10. If you make quality and service your business, be prepared to sell a lot of honey at a decent retail price at roadside markets.

+++++

## **10 Qualities of a Successful Roadside Market**

1. Benefits must be both to farmer and consumer.
2. Satisfy consumer demand with ample supplies of fresh, good quality products.
3. Good location with ample parking and safe entry/exit.
4. Attractive, uncluttered market site.
5. Use imaginative displays of products.
6. Offer different quantities at a price consistent with quality.
7. Well-trained, motivated employees offering courteous service.
8. Promote and advertise the market for appropriate customers.
9. Use ethical, honest and wise business practices.
10. Keep abreast of trends, issues and business changes.

Reprinted from *New Jersey Beekeepers Assn. News* - December 1999/January 2000



# Protein Is Important, Too

By Patrick Henry

from *The Speedy Bee*, March 2000

A few years back, two beekeeper friends of mine, Dale Bauer and Dewey Robinson, gave me some literature on proteins in honey bees. Well, I have plenty to do it seems, so this information spent several weeks piled on my desk. One evening, I began to read some of it and the more I read, the lights began to slash, thus the in-depth research began, of which I wish to share with you.

Without getting too expanded here, there are two main food sources for bees, one being nectar, fructose, glucose and sucrose the carbohydrates, either gathered by the bees or fed by the beekeeper, all pretty well standard so far. Then comes protein, primarily from pollen. Protein is equally important, if not more important to the health of the honey bee than carbohydrates.

The industry has pretty well solved the supplement feeding of carbohydrates, but protein feeding seems to be a shotgun affair at best, with mixes of soy flour, canola, rape, pollens, brewers yeast, dried eggs, pollard, and the list goes on and on. All of which is fed in the patty form or dry free choice forms inside and outside of the hive, and with varying degrees of success.

I think most of us would agree that pollen (protein) source of supplement is important to a healthy bee. At this point, I would like to share some facts about pollen and its effect on honey bees, which I did not know until I began this research. The information that follows got the wheels to turning.

Do you know what percent of dry weight protein your bees are?

A. The percent of protein in honeybees can vary from 26% to 70%!

B. A healthy bee must be above 40% dry weight body protein.

C. When the body protein of the bee drops below 40% during the honey flow or brood rearing, the life span of the bee also drops to 20 - 26 days. When the percent of body protein is above 40%, in the 50 - 60% range, the bee's life span increases to 46 - 50 days.

D. All pollen protein percentages are not the same, with varying ratios of amino acids (protein) and in the percent of total protein.

E. A bee's source of protein (pollen or supplement) must be at 24% or above to maintain a healthy hive.

F. A bee's body protein percent will increase when ample protein is available and the bee will cannibalize their body for protein during periods when protein is not available.

G. Queen rearers, check this out: bees with higher body protein percentages give greater percentages of cell acceptance, larger queen cells, and produce larger queens with higher mating percentages. This really shows up toward the end of the queen rearing season when the bees are under the greatest stress.

Those are some of the highlights of the importance of protein in the honey bee's diet. So, let's talk a little about protein. There are 20 amino acids that occur in or make up protein. Ten of these amino acids must be present in the bee's diet for good health and growth. The 10 amino acids are known as "essential" amino acids.

The "essential" amino acids must come from an outside source of protein. These 10 essential amino acids must be present in the bee's diet and in the proper ratio in order for the body to fully utilize a protein source. When the 10 essential amino acids are present, the body is

capable of producing the balance of amino acids within, not coming from an outside source. The amino acids produced within the body are called "non-essential" amino acids. The 10 essential amino acids, when combined in proper ratios, achieve a "nitrogen equilibrium". The two most important words of this article. When this is achieved in the diet, it triggers the maximum utilization of total available proteins, which otherwise would be wasted.

Having all of this information, what have we done with it? We had the help of Dale Bauer - Bauer Bee Feed and Supply - we used his bees, both queen yard and production, as a source of test bees using various mixtures, some with supplement, some without. Our protein percentages of the test bees were done by the Kjeldahl process at Lamar University Chemistry Department by students under the direction and supervision of Dr. Hugh Akers.

Our goal was to develop a liquid protein supplement of balanced amino acids that could be fed in conjunction with corn syrup to our bees, thus gaining a combination feed that can be fed at one hive visit to save labour costs. We achieved this with favourable results and have also gained some additional benefits by feeding protein in this manner.

By feeding a balanced ratio of amino acids (protein) in corn syrup we have resulted in better wintering of the bees. Bees seem less interested in taking in protein as their body protein percentages increase. When feeding the balance ratio mixed with the bee's carbohydrates source, we are able to force more protein on the bee. In other words, "pump up" the body protein percentages. Thus, the term "Super Bee".

For further information about this protein supplement or purchasing some protein supplements, contact: Dale Bauer or Patrick Henry, 134 Williford Rd., Kountze, TX 77625 or Rt. 2, Box 265, Fertile, MN 56540: phone toll free (888)650-6898 or (888)640-6898.

#### References:

- Akers, Dr Hugh - Lamar University Chemistry Department  
DeGroot, A.P. - Laboratory of Comparative Physiology, University, Utrecht. *Protein and Amino Acid Requirements of the Honeybee (Apis Mellifica L.)*  
Haydak, Mykola H. Department of Entomology and Economic Zoology, University of Minnesota. Various articles on bee nutrition.  
Kleinschmidt, G.J. *Nutrition for Long Life Bees.*  
Kleinschmidt, G.J. and Kondos, A.C. Queensland Agricultural College. *The Influence of Crude Protein Levels on Colony Production, The Effect of Dietary Protein on Colony Performance, Colony Management for Low Quality Pollens.*  
McCaughey, W.F. Department of Nutrition and Food Source, University of Arizona and Gilliam, Martha and Standifer, L.M. Carl Hayden Bee Research Center, Agricultural Research, U.S.D.A., S.E.A., Tucson, Arizona. *Amino Acids and Protein Adequacy for Honeybees of Pollens from Desert Plants and Other Floral Sources.*  
Parker, Ralph L. *The Collection and Utilization of Pollen by the Honeybee.*  
Spivak, Marla and Reuter, Gary S. University of Minnesota, Department of Entomology.  
Stace, Peter. H.D.A. Dip. Agric. Extension. *Protein Content and Amino Acid Profiles of Honey Bee-Collected Pollens. The Hive and the Honeybee - Honeybee Nutrition.*